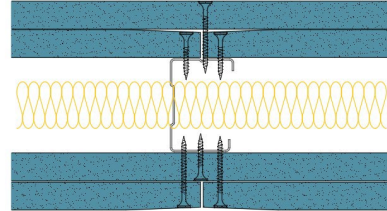


## 50-K-60(25) - SPEEDLINE System Data Sheet - Version V1 (24-10-23)

SPEEDLINE 50mm 'C' Stud Partition @600mm Ctrs,  
with 2x Knauf 15mm Soundshield Plus each side,  
25mm APR



### System Performance Breakdown

Fire Resistance:

BS476 Part 22:1987:

Test Ref & Date or Applied Ref & Report:

Max Height:

Thickness:

Duty Grade: BS 5234: Part 2:1992:

Sound Insulation:

**120/120 Minutes** (Integrity/Insulation).

**BMT/FEP/F14077 - BRE Report P102396-1011B**

**Refer to Speedline Specification Clause**

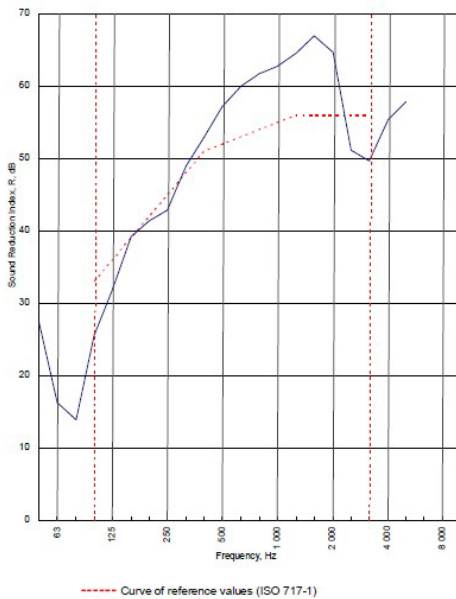
**112 mm.** (At Base Track, Excluding Finishes)

**Severe - Annexes A-F**

**52  $R_w$ dB**, Date Tested or Assessed Against - 50-K-59(25)

Test Code:  
H17386GA  
Test Date:  
17/06/2011

Freq. Hz	R dB
50	27.3
63	16.2
80	13.8
100	25.5
125	31.8
160	39.2
200	41.3
250	42.9
315	49.0
400	53.0
500	57.2
630	60.0
800	61.7
1 000	62.7
1 250	64.6
1 600	67.0
2 000	64.7
2 500	51.1
3 150	49.7
4 000	55.4
5 000	57.9
6 300	
8 000	
10 000	



Rating according to BS EN ISO 717-1:1997

**$R_w$  (C;Ctr) = 52 (-2;-8) dB**  
Max dev. 7.5 dB at 100 Hz

Evaluation based on laboratory measurement results obtained by an engineering method:

$C_{50-150}$ = -8 dB	$C_{50-500}$ = -7 dB	$C_{100-500}$ = -1 dB
$C_{2,50-3,150}$ = -19 dB	$C_{2,50-5,000}$ = -19 dB	$C_{2,100-5,000}$ = -8 dB

TESTED AT ONE OF THE UKAS ACCREDITED LABORATORIES BELOW

- B.T.C (H-Ref on Graph)
- B.R.E
- AIRO
- S.R.L

Customer: Metsec plc Hepsec Division



BTC 17411A: Page 9 of 11

SPEEDLINE Drywall Systems, Adsetts House, 16 Europa View, Sheffield Business Park, Sheffield, S9 1XH.

Tel: 0114 231 8030.

Email: [enquiries@speedlinedrywall.co.uk](mailto:enquiries@speedlinedrywall.co.uk)

(As per the requirements set out in ISO/IEC 17025:2017 regarding test data the results stated have been carried out by voestalpine Metsec plc as part of the contract to supply Speedline Metal Sections to SIG Plc)